

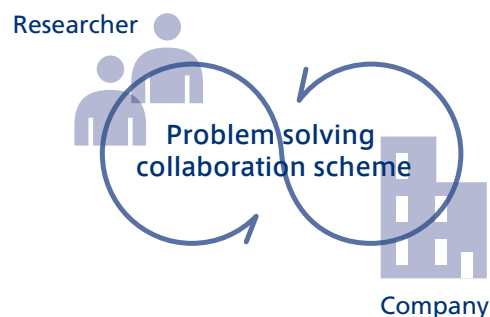
# Legal Affairs Division Policy

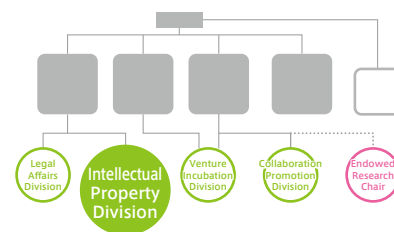
## —Connecting All Parties

The Legal Affairs Division at the SACI serves as an on-campus and in-house legal resource for knowledge and technology transfer by Kyoto University. It supports and advances the university's overarching mission and vision by providing professional and knowledgeable legal support and services in the course of the SACI's operations. The knowledge and expertise provided by the Legal Affairs Division facilitates and encourages fruitful, long-term, and balanced collaboration among the industrial, government, and academic sectors, with a view to driving innovation for the benefit of the general public and society.

The primary roles of the Legal Affairs Division include:

- (i) Assisting with the development of the university's policies and regulations for knowledge and technology transfer and with decision-making on related matters.
- (ii) Providing legal advice and consultation in the course of the SACI's operations, including drafting, reviewing, and negotiating knowledge and technology transfer agreements (such as non-disclosure agreements, IP license agreements, and collaborative research agreements) and helping to design and develop frameworks for collaboration for innovation, including seed fund management for university research-based startups.
- (iii) Conducting practical investigations on the issues and best legal practices relating to knowledge and technology transfer by universities, including those relating to intellectual property protection and seed fund management for university research-based startups.





# Obtaining Rights on Research Results (Intellectual Property) and Social Implementation

Owing to the long history of innovation through academic research at Kyoto University (KU) which benefits the society, KU's IP division, helps KU with the ownership, handling, implementation strategies and licensing activities of IPs arising from KU's research.

## Filing, Obtaining and Maintaining Patents

KU's research makes to-be-refined but scientifically groundbreaking inventions, which translates to having future industrial scale applications and use. Intellectual Property Division scrutinizes the necessity of KU innovations patent filing based on the patentability and marketability, manages patent prosecution and maintenance. Patent searches, procedures of patent prosecution and maintenance of individual cases are entrusted to Kyoto University office of TLO-KYOTO Co., Ltd.

Our licensed patents may not always be ready to implement and need further testing before they can be applied in the market. In such cases, alternative but effective options such as research collaboration with companies, obtaining patent as a seed for national research project to foster the development and filing patent applications on the results of collaboration and development are considered. We offer necessary advice and support on intellectual property strategy to KU researchers who plan to establish venture business in future.

## Strategic Utilization of Intellectual Properties

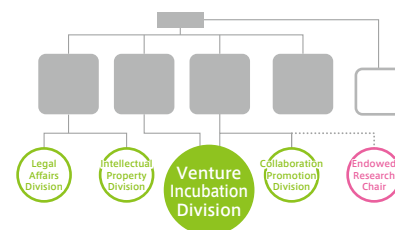
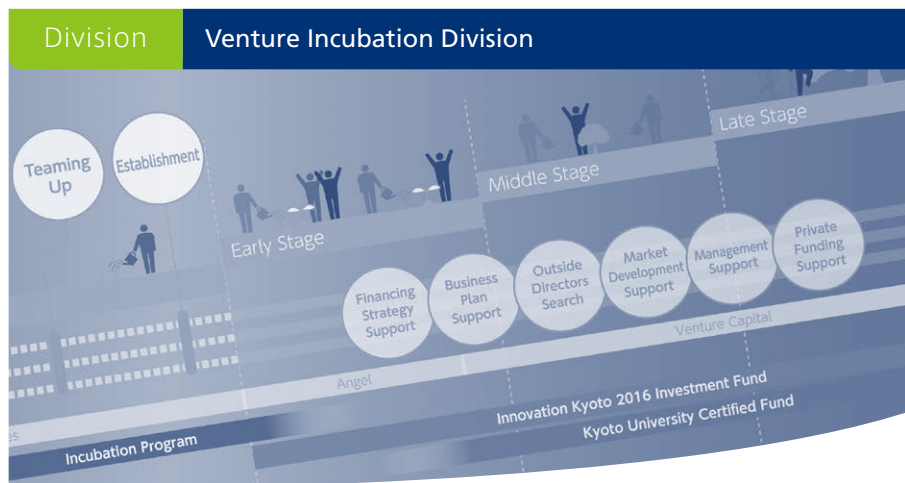
KU's IPD provides expert advice to KU researchers when approached with inquiries on intellectual property. In order for KU's patents to implement in industry, we develop the industrial utilization and/or implementation strategy and mediate for the technology transfer with TLO-KYOTO. Such activities include licensing to companies, setting-up further promoting R&D structure and establishment of venture business.

To achieve the best outcomes while implementing the best practices, KU's IPD works in cooperation with internal and outside organizations.

## Invention Consultation, Contract Review

IPD also reviews and confirms the intellectual property related clauses in contracts such as research collaboration, commissioned research and non-disclosure agreements.





# Supporting the practical use and commercialization of Kyoto University (KU)'s research outcomes

To promote pioneering and excellent KU research outcomes from seed stage and to link the results while creating new industries and social values, Venture Incubation Division provides diverse support for the practical use and commercialization of KU's research results. This is realized through GAP Fund Program, Incubation Programs, Kyoto University Venture incubation Center (KUViC), and others. In addition to working with the university's internal organizations such as Kyoto University Research Administration (KURA), the Intellectual Property Division, and the Collaboration Promotion Division, Venture Incubation Division also plans collaborations with external organizations such as Kyoto University Innovation Capital Co., Ltd. and TLO-KYOTO Co., Ltd. Other than the aforementioned responsibilities, the division also provides advice on the commercialization process, such as setting up a company, dealing with researchers' venture, financial planning, and business planning.

## GAP Fund Program

GAP Fund Program is a support system that examines the practicability of research results. It provides up to 3 million yen in funding for up to one year to KU faculty members for testing their innovations to commercialize.



## Incubation Program

Incubation Program helps raise funds from venture capitals (VCs) while extending cooperation between KU researchers and entrepreneurs with the aim to commercialize research outcomes. The program provides up to 30 million yen per year for a maximum of three years towards a joint project between KU faculty and potential or actual business owners looking to commercialize research results in venture companies.

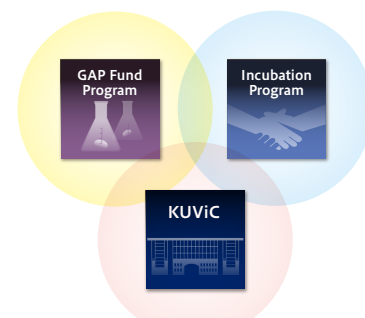


## Kyoto University Venture incubation Center (KUViC)

The center helps accelerate commercialization of research outcomes by providing office space where venture companies can move in and establish their headquarters on the university campus. This enables KU researchers and venture company's management team to work closely before and after the company is founded.



## Examples of the practical use and commercialization of research outcomes with our support.



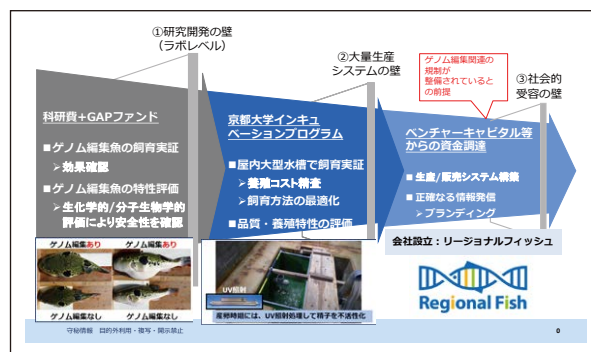
### GAP Fund Program

- **Specializes in social implementation of genome-edited fish.**

Once practicability testing is concluded using the GAP Fund Program, Dr. Kinoshita's group sought Incubation Program's support to accelerate the commercialization. Dr. Kinoshita, Assistant Professor / Regional Fish Institute, Ltd

- **Creates performance data based on musical piece isolation technology.**

Dr. Yoshii, Associate Professor / UTSUWA Inc.



### Incubation Program

- **Perovskite solar battery**

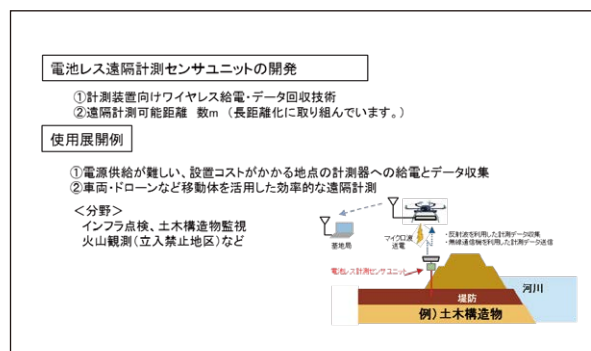
Professor Wakamiya / ENECOAT TECHNOLOGIES Co., Ltd.

- **Wireless measurement sensors using microwave energy transmission technology**

Professor Shinohara / Sho Engineering Corp.



 ENECOAT TECHNOLOGIES



### Kyoto University Venture incubation Center (KUViC)



DataGrid Inc.



Gankill Pharmaceutical Co., Ltd.



Cleanhearing Inc.



Anamorphosis Networks Co., Ltd.



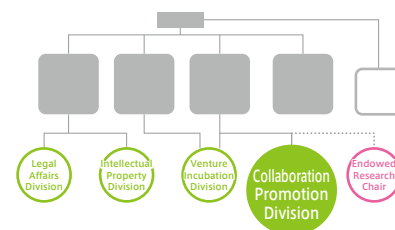
UTSUWA Inc.



MaRI Co., Ltd.



**SACI** Office of Society-Academia  
Collaboration for Innovation  
KYOTO UNIVERSITY



# Serving Societal Needs : Collaboration to Solve Problems with Our Rich Resources and Special Expertise

## 1. National project promotion function

Our division aims to acquire new national projects by analyzing national tasks and social needs, collaborating with relevant ministries, agencies, and companies, and encouraging the country from the policy planning stage.

## 2. Joint research strategy and support function

Based on shared research interests, our division plans and supports joint research strategies between companies and researchers.

## 3. International collaboration promotion function

To work closely with Kyoto University's global partners, our division builds networks with various partners, participates in joint research programs and research trend surveys, and organizes joint seminars and symposiums.

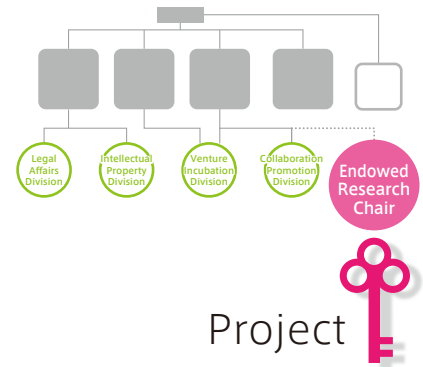
## 4. University/Local cooperation promotion function

Our division promotes "Kyoto Academia Forum" in Marunouchi, Tokyo, while sharing Kyoto's culture, arts, and science in the Kanto area, and also helps and deals with local governments' and companies' challenges.

Having offices in multiple places, we offer great opportunities in establishing and promoting collaborations among industry, government, and academia, working hand-in-hand with Kyoto University Research Administration (KURA) and the Kyoto University subsidiaries, such as TLO-KYOTO Co., Ltd.(TLO-KYOTO), Kyoto University Innovation Capital (KYOTO-iCAP), and Kyoto University Original.







# IMS-Entrepreneurship Education

**IMS (Innovation Management Science Research Division), an endowed research division (project) of SACI, provides a leading entrepreneurial education program that will produce future entrepreneurial leaders who can actively create new values with original ideas and futuristic vision/aspirations.**

- (1) Develop and implement entrepreneurial education programs for undergraduate/graduate students (degree/non-degree).
- (2) Conduct research on entrepreneurship and teaching methods.
- (3) Develop entrepreneurial ecosystem.
- (4) Promote awareness and alliances through which IMS aspires to contribute to the society-academia activities at SACI.

## IMS's entrepreneurship education program

- IMS uses private funds such as donations from companies that support the development of entrepreneurial leaders. It also operates by using funds from the industry, government, and academia, including various grants and university budgets.
- Acknowledging the fact that “people” as the most essential part of venture ecosystem, IMS takes charge of developing next generation leaders who can start new businesses with advanced expertise and challenging spirit.
- Our programs are designed according to the levels of proficiency and interest at each stage from the basics to the practice, involving for example a wide range of activities from entry-level lectures to undergraduates to mentoring/coaching for early-stage startups.

## Programs and the Main Contents

Common Graduate Courses
Research commercialization program, EDGE-NEXT (Ministry of Education, Culture, Sports, Science and Technology) program
Innovation/ Technology Commercialization PBL
Seminars in Liberal Arts and Sciences (ILAS seminar)
Program to connect high schools to universities
KUEP (Kyoto University Entrepreneur Platform)

"Introduction to Entrepreneurship"  
"Entrepreneurship Exercise," "Intellectual Property"

"GTEP Catapult" (support for raising funds from VC through mentoring and coaching), "Enterprise and Business Creation," "Venture Business Theory," "Career Seminar @ Kyoto" (an entry program)

"Technology Innovation Commercialization Course GTEP"  
(available in Tokyo and Kyoto for working adults and researchers)

"Innovation and Economic Society"

ELCAS "Seminar for  
Creating a Future"

Provides prototyping and various types  
of meetings using digital fabrication tools.

Project



## The students' achievements in entrepreneurship and winning awards

**~30 Startups 2014-2018**

**Original Something**

---

**Awards**

**Selected**

[venture@saci.kyoto-u.ac.jp](mailto:venture@saci.kyoto-u.ac.jp)

<https://www.saci.kyoto-u.ac.jp/ip/invention/>



**SACI** Office of Society-Academia  
Collaboration for Innovation  
KYOTO UNIVERSITY