



SACI Office of Society-Academia
Collaboration for Innovation

KYOTO UNIVERSITY



CREATING NEW VALUE
THAT CONTRIBUTES TO THE GLOBAL SOCIETY

Goals of the Office of Society-Academia Collaboration for Innovation (SACI)

Ever since Kyoto University (KU) was founded, based on a strong sense of curiosity, deep contemplation, and ground breaking research, KU has been generating outstanding results, thereby helping to establish new academic fields and interests. In addition, KU also produces human resources with diverse experience and knowledge.

To keep up with the paradigm shift caused by constantly evolving global, social, and environmental issues, KU has been actively promoting and establishing collaborations between the society and academia. This helps the university to pursue and achieve its grand mission of “harmonious co-existence between human and ecological communities on earth.”

Since its establishment in 2007, SACI has been engaged in three fundamental activities that are “to promote industry-government-academia collaborations,” “to obtain and utilize intellectual properties,” and “to foster and support startup companies.” By utilizing these activities and KU’s cutting edge research and innovations, SACI implements and carries out industry-government-academia activities to contribute towards KU’s mission.

Being a Designated National University Corporation, Kyoto University fulfills its role as an interface between society and academia. To further accelerate industry-government-academia collaboration activities, KU founded Kyoto University Original Co., Ltd. (KUO), a new subsidiary company, in June 2018. KUO offers consulting, training, and teaching services, along with other demands and needs of the collaborators and/or clients. Through mutual and effective cooperation between KUO and other companies funded by KU, namely Kyoto University Innovation Capital Co., Ltd. (Kyoto-iCAP) and TLO-KYOTO Co., Ltd. (TLO-KYOTO), SACI intends to develop a new “KyotoU Model” of industry-government-academia collaboration to maximize the utilization of research outcomes and intellectual properties.

Thank you for your ongoing support and cooperation in successfully performing SACI activities to achieve our goals and mission towards the progress of Kyoto University, society, and everyone involved.

Kyoto University Executive Vice President
for Industry-Government-Academia Collaboration
Director-General for SACI
Asonuma Shinji

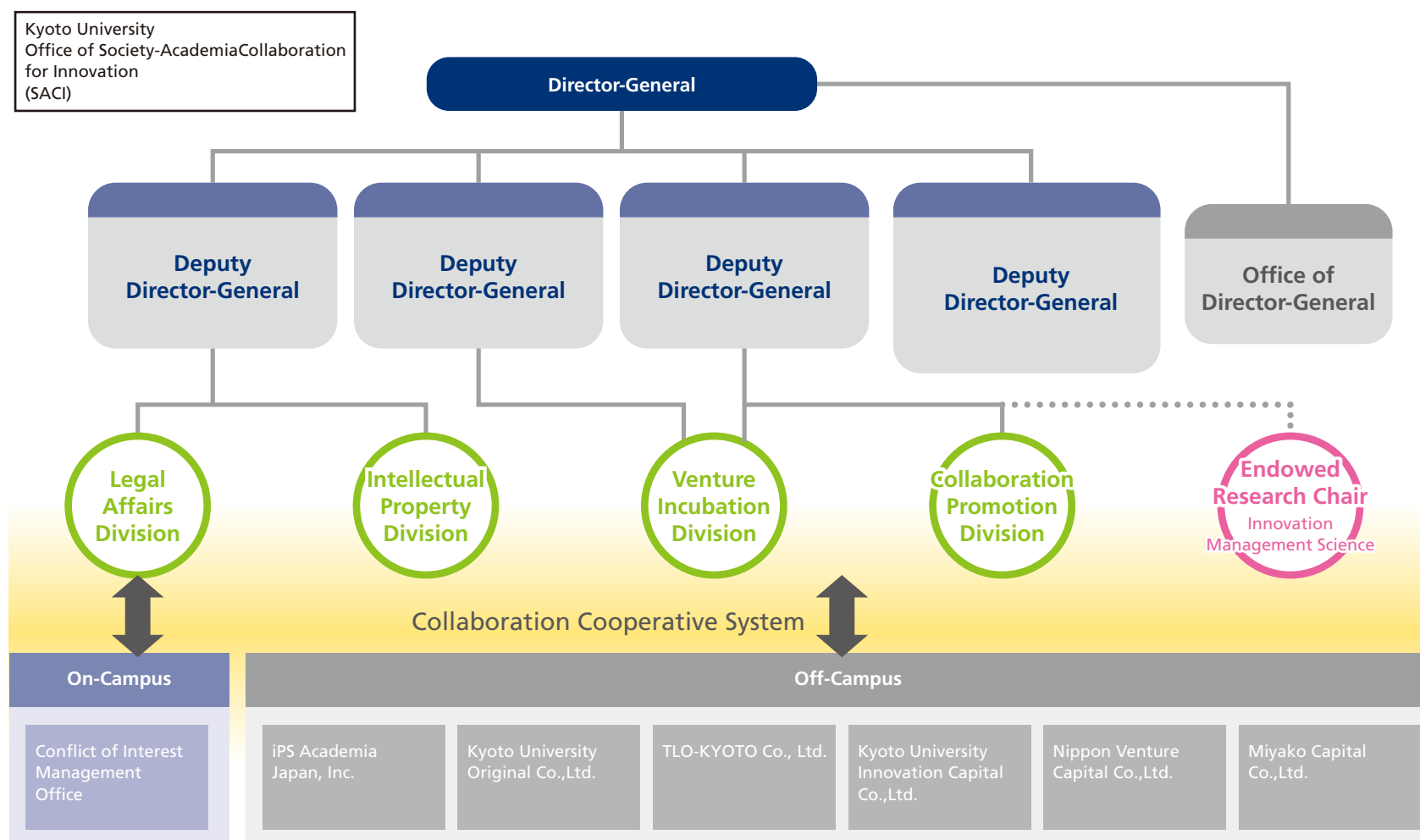


Main Activities

1. Plan and propose investigative research strategies related to industry-government-academia collaborations.
2. Promote comprehensive, commissioned, and collaborative research programs.
3. Implement and support collaborative research projects at SACI.
4. Promote and support international and nation-wide collaboration with research institutions, companies, local governments, schools, and communities.
5. Plan, propose, and support strategies to obtain and utilize intellectual properties.
6. Support start-up companies, entrepreneurs, and researchers who are involved in commercializing Kyoto University’s research results.

Organizational Structure

At SACI, Deputy Directors-General give guidance to their respective specialized fields under the leadership of the Director and promote collaborative activities between industry, government, and academia through efforts by the following divisions and the Endowed Research Chair.

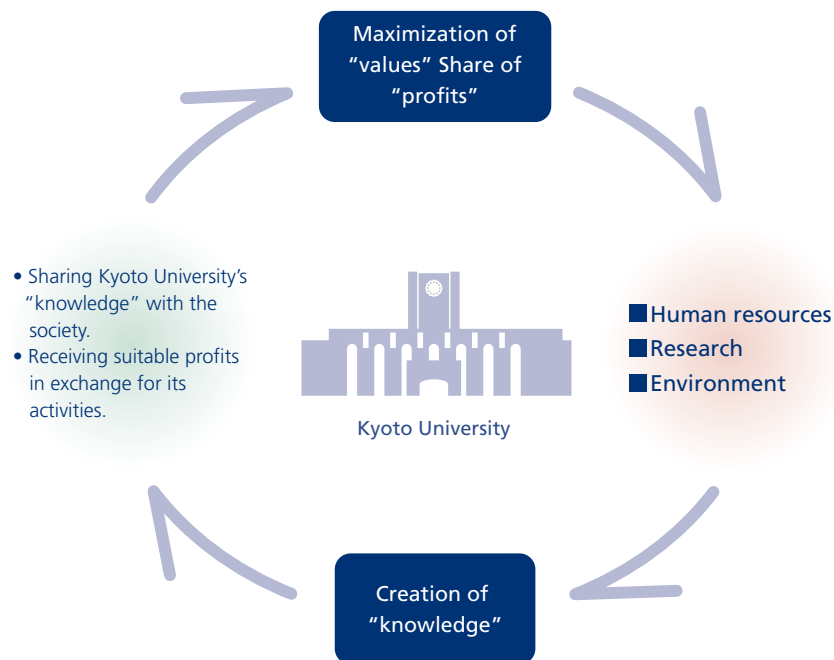


"Kyoto University Model" Eco-cycle / Industry–Academia Collaborative Value Chain

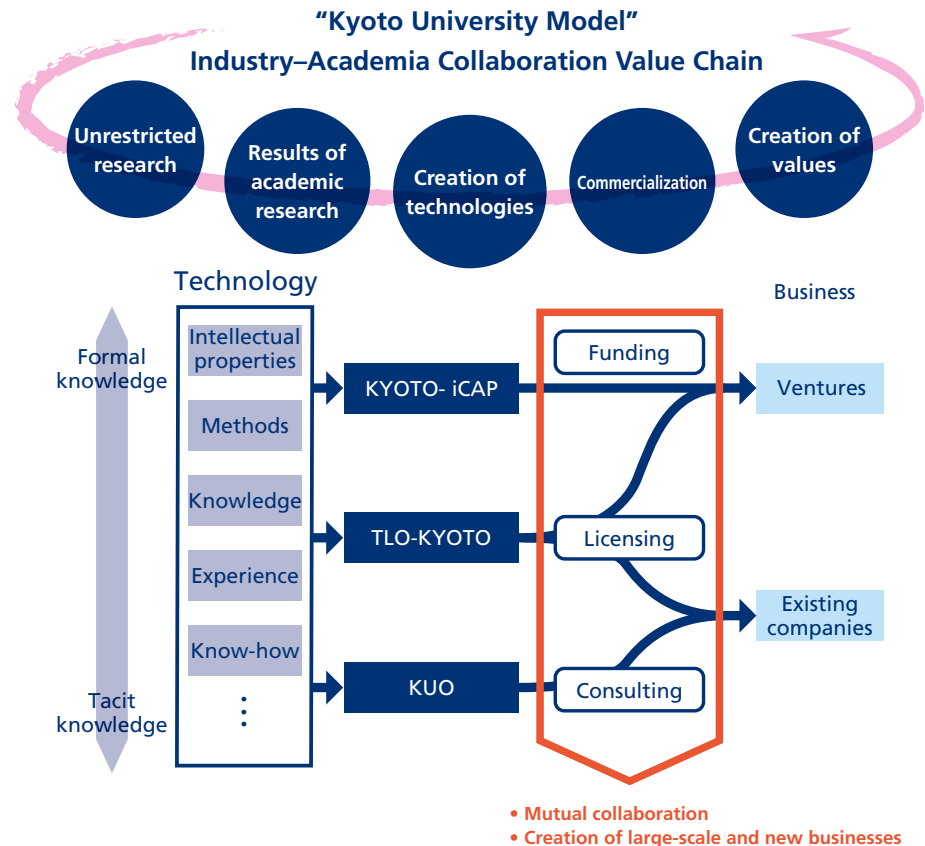
"Kyoto University Model" Eco-cycle connects "knowledge" created at Kyoto University in collaboration with society, maximizes the "value," shares "profits" and energizes research outcomes and others.

Using this "Model," and by following the Kyoto University's philosophy and management policy, SACI aims to produce large-scale and new businesses.

"Kyoto University Model" Eco-cycle



This is also made possible by closely working with university's subsidiary companies: Kyoto University Original (KUO) which conducts business consulting and training services, TLO-KYOTO which is engaged in transferring technologies and licensing activities, and KYOTO-iCAP which funds and support ventures.



Introduction to SACI's Divisions

SACI's mission is to plan and propose investigative research strategies involving industry-government-academia collaboration while promoting and supporting collaborative projects with industry and/or government agencies.

Under the management of SACI's Director, SACI expands activities as a management team for Kyoto University to further develop industry-government-academia collaborations.

Divisions

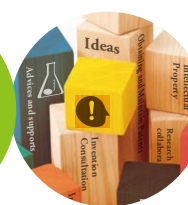
Legal Affairs Division



Connecting all parties

Given different roles and cultures of the industry, government, and academia in our society, we provide full support to the stage of utilizing University's seeds into the society through our legal knowledge and negotiation skills.

Intellectual Property Division



Obtaining rights on research results (intellectual property) and social implementation

We apply for and obtain patents for Kyoto University's research innovations. Our division also provides patent's industrial implementation strategies and supports licensing activities.

Venture Incubation Division



Supporting the practical use and commercialize of research results

We provide comprehensive support for activities aiming towards the practical use and commercialization of KU's research results from the seed stage through "GAP Fund Program," "Incubation Program," "Venture Incubation Center (KUViC)", and others.

Collaboration Promotion Division



Serving societal needs for various collaborations

This division actively promotes coordination of joint research among various (academia-industry-government) entities while effectively creating ways to return KU's research outcomes to the society.

Project

IMS

Endowed Research Chair Innovation Management Science



IMS - Entrepreneurship Education

IMS provides a leading entrepreneurial education program that will produce future entrepreneurial leaders who can actively create new values from original ideas with futuristic vision/aspirations.

History of SACI

- 1996 ● Established Venture Business Laboratory (VBL).
VBL promoted research and development of advanced electronic devices and materials. It also cultivated students and researchers with a strong entrepreneurial spirit.
- Apr. 2001 ● Established International Innovation Center (IIC).
IIC created new industries by merging different academic fields and collaborating with industries and others from an international perspective.
- Sep. 2003 ● Established Intellectual Property Office (IPO).
The IPO was established for managing and using intellectual properties of Kyoto University.
- Apr. 2004 ● Kyoto University was transformed into a National University Corporation.
- Apr. 2005 ● Established International Innovation Organization (IIO).
IIO served as an organization for both comprehensively and functionally implementing industry-government-academia collaboration activities. It also promoted intellectual property acquisition/utilization and supported startup activities from a unified university-wide perspective.
- Jul. 2007 ● Established the Office of Society-Academia Collaboration for Innovation (SACI) and the Innovative Collaboration Center (ICC).
SACI and ICC were established to achieve additional growth and progress for industry-academia-government collaboration, intellectual property, and startup business activities.
- Apr. 2010 ● The Innovative Collaboration Center (ICC) was integrated into SACI.
This integration process unified university's industry-academia-government collaboration activities into one organization.
- Apr. 2012 ● Venture Business Laboratory (VBL) business operations were integrated into SACI.
Activities cultivated by VBL to support the incubation and to launch startup businesses were transferred to SACI.
- Dec. 2014 ● Established Kyoto University Innovation Capital Co., Ltd., a wholly-owned
Wholly-owned subsidiary of Kyoto University
- Jan. 2016 ● Acquired about 68 % ownership of Kansai Technology Licensing Organization Co., Ltd. stock.
The acquisition was to strengthen intellectual property strategies by building strong collaborative relationships and further stimulate technology transfer activities.
- Jul. 2017 ● Established Kyoto Academia Forum in Marunouchi, Tokyo.
The forum serves as a base for KU's activities in Tokyo and other universities of Kyoto Prefecture.
- Jun. 2018 ● Established Kyoto University Original Co., Ltd.
Wholly-owned subsidiary of Kyoto University for offering consulting, training and teaching services.



SACI offices in the Tokyo metropolitan area

"Kyoto Academia Forum" in Marunouchi

Kyoto Academia Forum shares and promotes academic information generated by KU and other universities of Kyoto Prefecture. It introduces the renowned culture of Kyoto through collaboration and cooperation with its partner universities. Various events are held with partner universities to make Kyoto's culture, art, and science to be widely recognized by the public while enhancing Kyoto's appeal and value.

Shin-Marunouchi Building 10F, 1-5-1 Marunouchi Chiyoda-ku Tokyo, 100-6590

<http://www.kyoto-af.jp/> (Japanese version only)

SACI Tokyo Nihonbashi Satellite office

SACI also has a satellite office in Nihonbashi, Tokyo, to facilitate collaborative activities between industry, government, and academia, such as investment projects and joint research efforts.

Nihonbashi Life Science Building 9F, 2-3-11, Nihonbashi Honcho, Chuo-ku, Tokyo, 103-0023

<https://www.saci.kyoto-u.ac.jp/satellite/>