



SACI Office of Society-Academia
Collaboration for Innovation
KYOTO UNIVERSITY



CREATING NEW VALUES
THAT CONTRIBUTE TO THE GLOBAL SOCIETY

Mission

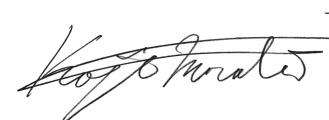
More than ever before, universities are strongly desired to contribute to creating futures and tackling with societal challenges. These are also our goals at the Office of Society-Academia Collaboration for Innovation (SACI), Kyoto University. We achieve our mission by sharing academic knowledge with the industry sector and creating together new values.

The traditional approach alone, such as technology transfer and collaborative research promotion, would no longer suffice to achieve our goals in this rapidly changing innovation landscape. More is necessary: We will advance open innovation dialogues and activities with various domestic and overseas stakeholders; build a world-class startup ecosystem with our local and regional communities; continue to champion innovation culture; and further promote our entrepreneurship spirits and activities, already nurtured and developed at Kyoto University.

We also want to emphasize the importance of fundamental research, solidly based on inquisitive thinking and critical examinations. Fundamental research is the key to the creation of wide-ranging insights and technologies, eventually bringing benefit to society in the true sense. We strive to support further advancement of fundamental research at Kyoto University with our financial gain that SACI's activities generate.

We look forward to hearing from and working with you. We appreciate your continued support.

Sincerely,



Koji MUROTA
Director-General for SACI

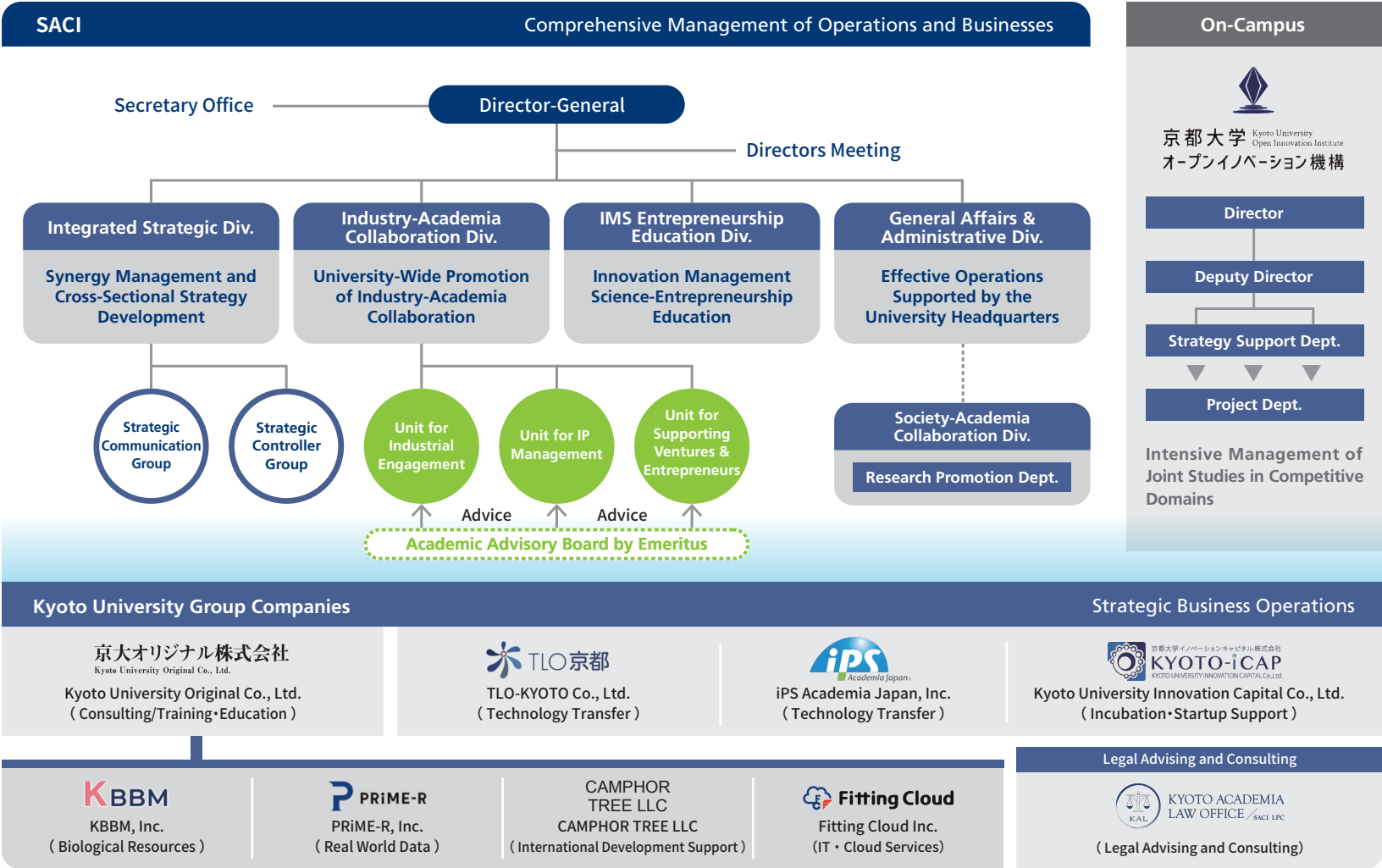


Engagement

1. Strategy and policy development for industry-academia collaborative activities
2. Support and promotion of collaborative and commissioned research
3. Cooperation and collaboration with overseas research institutions and companies
4. Engagement with local and regional communities
5. Management and utilization of intellectual properties
6. Creating world-class startup eco-systems

Organization

Office of Society-Academia Collaboration for Innovation (SACI) develops strategies and policies for the comprehensive management of Kyoto University's collaboration activities with industry, government, and academic sectors. We closely cooperate with our subsidiary group companies, and related organizations on campus.





Introduction to SACI's Divisions

Integrated Strategic Div.

Synergy Management and Cross-Sectional Strategy Planning

This division maximizes the synergistic cooperation among SACI and the subsidiary group companies, and plans out cross-sectional and PR strategies and operations by integrating Strategic Communication Group and Strategic Controller Group.



Headquarters for PR and communications

As the strategic headquarters for PR and effective communications with industry and other sectors, this division develops and implements our strategy. Covering SACI and the subsidiary group companies, this division widely disseminates and promotes our industry-academia collaboration activities and outcomes, and also acts as the contact point for university and community partners.



The "Kyoto University Model" Business Operations

This division coordinates the subsidiary group companies for maximum cross-sectional synergy and plans out overarching strategies for delivering the benefit to the society, as envisioned in the Kyoto University Model of industry-academia collaboration value chain.

IMS Entrepreneurship Education Div.

Innovation Management Science-Entrepreneurship Education

Our activities range widely from promoting education and research in entrepreneurship to building a startup ecosystem. We develop our unique entrepreneurship educational programs for students, advance research, and provide support for startups. Our ultimate goal is to foster and support entrepreneur minds, who dare to create new values and passionately pursue their original ideas and ambitious dreams.

Industry-Academia Collaboration Div.

University-Wide Promotion of Industry-Academia Collaboration

This division consists of the following three operational units and provides university-wide expert support to promote industry-academia collaborations. This division also runs and requests Academic Advisory Board by Emeritus to provide support for strategic planning, such as expansion and continuity of joint research and business, and propose from a broad perspective.



Obtaining rights on research results (intellectual property) and social implementation

We apply for and obtain patents for Kyoto University's research innovations. Our division also develops patent strategies for industrial utilization and supports licensing activities.



Serving societal needs for various collaborations

This division promotes research collaboration and cooperation among academia, industry, and government sectors, aiming to serve the society with the effective implementation of Kyoto University's research outcomes.



Supporting the practical use and commercialization of research results

We provide comprehensive support for practical use and commercialization of KU's research results from an early stage. Our support program includes GAP Fund Program, Incubation Program, and Venture Incubation Center (KUViC), to name just a few.

General Affairs & Administrative Div.

Effective Operations Supported by the University Headquarters

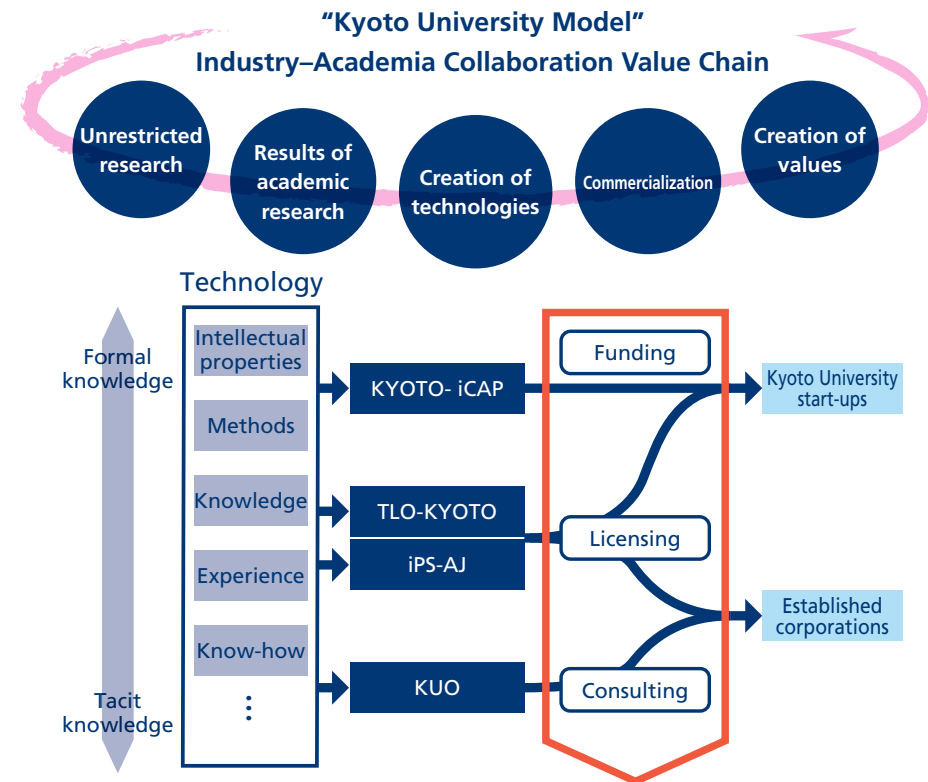
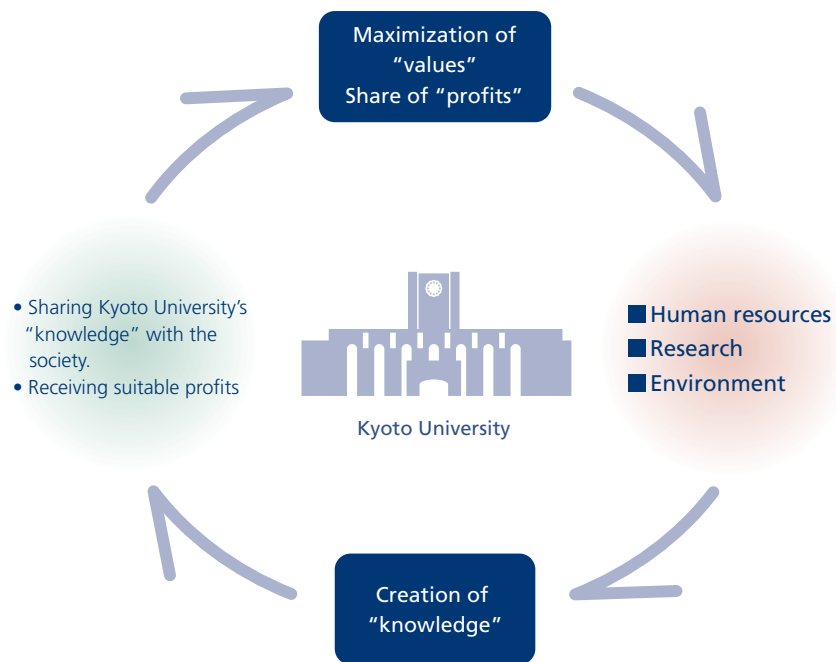
This division serves as the administrative office of SACI, with strong support of the University Headquarters' Society-Academia Collaboration Division. The highly cohesive relationship with the University Headquarters enables SACI to function fully as a university-wide organization and drive Kyoto University's vigorous industry-academia collaboration activities.

“Kyoto University Model” Eco-cycle / Industry–Academia Collaboration Value Chain

The Kyoto University Model envisions the following ecosystem and industry-academia collaboration value chain: Knowledge-Value-Profits-Research/Education-Knowledge. SACI aims to create new and large-scale businesses, and closely works with Kyoto University’s subsidiary group companies: Kyoto University Original Co., Ltd. (KUO), which offers

business consulting and training services; TLO-KYOTO Co., Ltd. and iPS Academia Japan, Inc., which specialize in technology transfer and licensing activities; and Kyoto University Innovation Capital Co., Ltd. (KYOTO-iCAP), which invests and provides supports for start-ups as a VC.

“Kyoto University Model” Eco-cycle



- Mutual collaboration
- Creation of large-scale and new businesses

History of SACI

- 1996 ● Established the Venture Business Laboratory (VBL).
In addition to promoting the research and development of advanced electronic devices and materials, VBL also cultivated students and researchers with a strong entrepreneurial spirit.
- Apr. 2001 ● Established the International Innovation Center (IIC).
The IIC created new industries by merging academic fields and/or collaborating with industry, or others, from an international perspective.
- Sep. 2003 ● Established the Intellectual Property Office (IPO).
The IPO established an organization for managing and using intellectual properties of the university.
- Apr. 2004 ● Kyoto University transformed into a national university corporation.
- Apr. 2005 ● Established the International Innovation Organization (IIO).
The IIO served as an organization for both comprehensively and functionally implementing industry-government-academia collaboration activities, intellectual property acquisition and utilization activities, and startup support activities from a unified university-wide perspective.
- Jul. 2007 ● Started the Office of Society-Academia Collaboration for Innovation (SACI) and the Innovative Collaboration Center (ICC).
SACI and the ICC were established to achieve additional growth and progress for industry-academia-government collaboration, intellectual property, and startup business activities.
- Apr. 2010 ● The Innovative Collaboration Center (ICC) is integrated into the Office of Society-Academia Collaboration for Innovation (SACI).
This integration process further enhanced SACI's role in carrying out industry-academia-government collaborations.
- Apr. 2012 ● Venture Business Laboratory (VBL) business operations were integrated into SACI.
Activities cultivated by VBL to support the incubation and launch of startup businesses were transferred to SACI.
- Dec. 2014 ● Established Kyoto University Innovation Capital Co., Ltd.
Wholly-owned subsidiary of Kyoto University
- Jan. 2016 ● Acquired about 68 % ownership of Kansai Technology Licensing Organization Co., Ltd. stock.
The acquisition was intended to strengthen intellectual property strategies by building strong collaborative relationships and further stimulate technology transfer activities.
- Jul. 2017 ● Established the Kyoto Academia Forum
The forum serves as a base for activities in Tokyo by Kyoto University and other universities in Kyoto.
- Jun. 2018 ● Established Kyoto University Original Co., Ltd.
Wholly-owned subsidiary of Kyoto University for offering consulting, training and teaching services, and so on.
- Jul. 2019 ● Established Kyoto University Open Innovation Institute
OI Institute houses a group of expert coordinators and provides intensive management of joint research in the competitive field.
- Oct. 2019 ● TLO-KYOTO Co., Ltd. renamed from Kansai Technology Licensing Organization Co., Ltd.
- Apr. 2020 ● Established Kyoto Academia Law Office
The former internal Legal Affairs Division was separated as an independent legal office.
- Aug. 2020 ● Made iPS Academia Japan, Inc. a subsidiary.
Kyoto University acquired 100% of voting rights.



SACI offices in the Tokyo metropolitan area

"Kyoto Academia Forum" in Marunouchi

"Kyoto Academia Forum" in Marunouchi disseminates and promotes Kyoto's culture, art, and science through the academic lens of Kyoto University and universities of Kyoto Prefecture. Kyoto University and the partner universities organize individual and joint events and programs to introduce Kyoto's values and fascinations, yet to be discovered by the public.

Shin-Marunouchi Building 10F, 1-5-1 Marunouchi Chiyoda-ku Tokyo, 100-6590

<http://www.kyoto-af.jp/> (Japanese version only)

SACI Tokyo Nihonbashi Satellite office

SACI' satellite office in Nihonbashi, Tokyo, facilitate collaborative activities, such as investment projects and joint research effort, among industry, government, and academia sectors in the Kanto Area.

Nihonbashi Life Science Building 9F, 2-3-11, Nihonbashi Honcho, Chuo-ku, Tokyo, 103-0023

<https://www.saci.kyoto-u.ac.jp/satellite/>